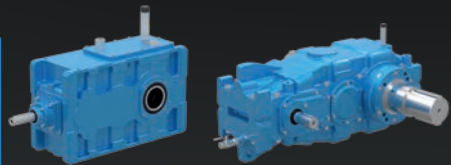


Rubbed Tyred Gantry (RTG)



Brevini EvoMax™ Travel, Trolley and Hoisting Gearboxes

- Improved torque distribution curve, with 5 new sizes available
- Increased torque density, providing more mechanical power without compromising weight and size
- Curved top and/or bottom housing options, optimised to best fit hoisting applications
- Improved gearing profiles and low oil level, resulting in higher efficiency and reduced noise
- New housing material options, allowing for superior impact toughness and low temperature operation
- High level of modularity and multiple accessories as standard



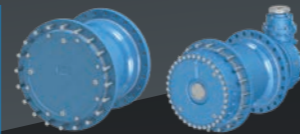
Brevini™ Gearmotors Series

- Extensive torque range
- High efficiency
- Diverse low speed shaft options



Brevini™ Industrial Planetary Gearboxes

- Anti-sway drive
- New concept design with bevel set on second stage
- High efficiency



Spicer™ Wheel Drives Series

- Customized solution
- Bevel gear unit at the input for electric motor and/or cardan shaft connection available



Brevini™ Industrial Planetary Gearboxes S Series

- Nominal torques up to 2,170 kNm
- Multiple output shaft options
- Inline and right angle configurations available



Brevini™ Helical Bevel Helical Gearboxes Posired N Series

- Main hoist drive with extended centre distance
- Dedicated design for single-drum drive
- Auxiliary drive system on board



Brevini™ Winch Drives SLW Series

- Torque range up to 460 kNm
- Plug-in planetary solution
- More space for easy access to maintenance and service components
- Right-angled configurations available as standard

